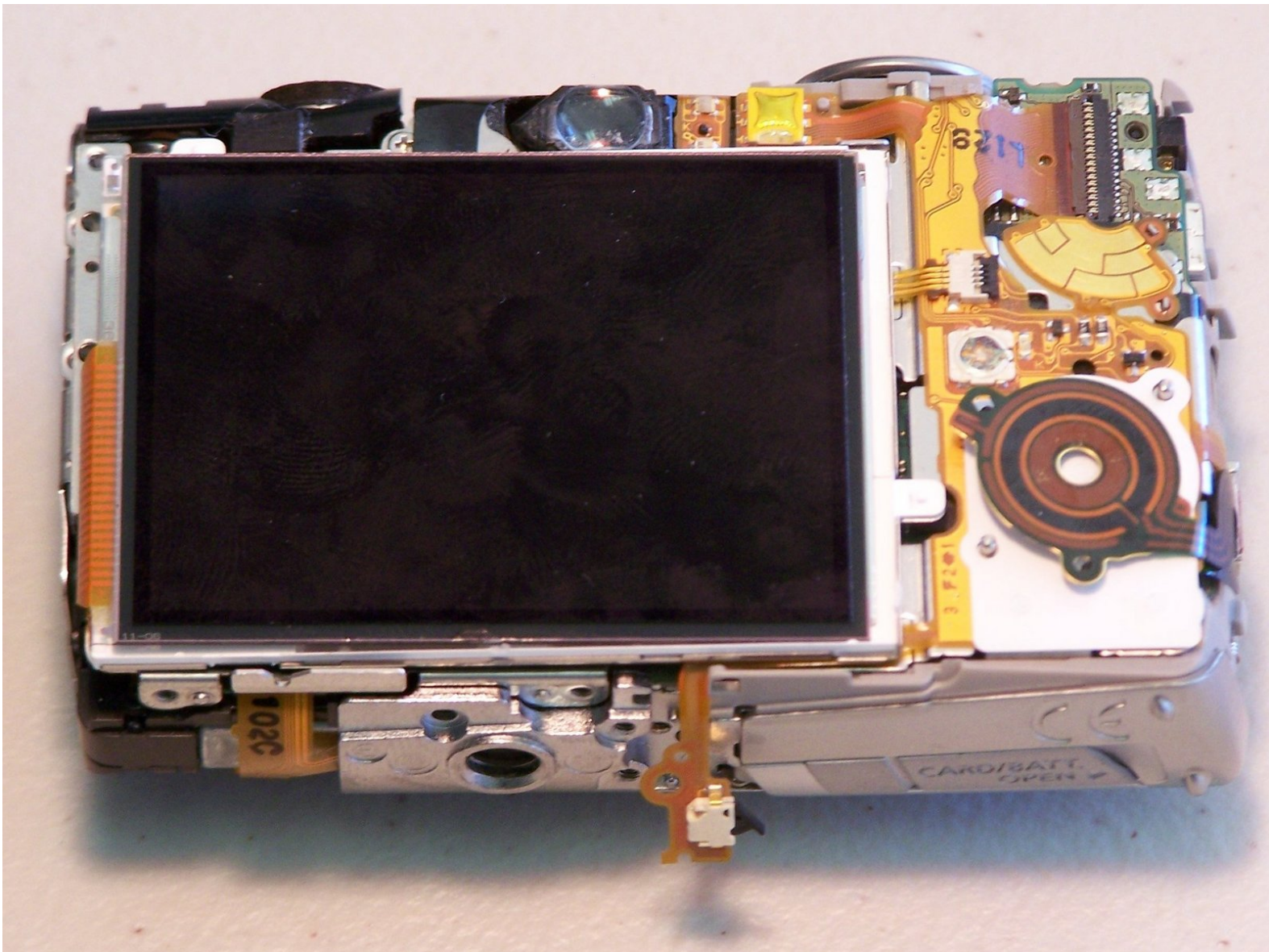




Canon PowerShot SD850 IS LCD Screen Replacement

Written By: iDeleted



INTRODUCTION

Use this guide to access LCD screen and make repairs.



TOOLS:

- [Phillips #00 Screwdriver](#) (1)
 - [Metal Spudger](#) (1)
 - [Phillips #0 Screwdriver](#) (1)
 - [Spudger](#) (1)
 - [Tweezers](#) (1)
-

Step 1 — Battery



- Using your fingernail, slide the light gray tab towards edge of camera.
- Slide the light gray door and pull up to open the door.
 - ⓘ In the camera shown in the photos, there is not a Memory Card or Battery.
- Both Battery and Memory Card slots should be visible.

Step 2



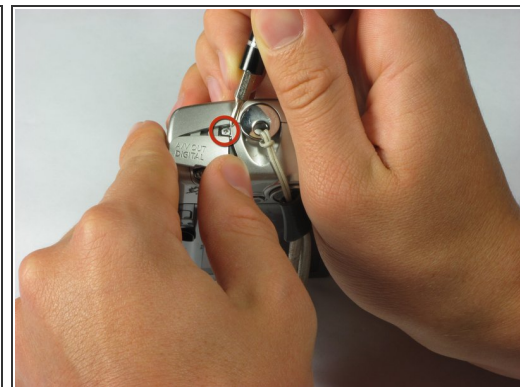
- Use your fingernail and slide the small brown tab towards the edge of the camera.
 - The battery will pop up.
 - Pull battery straight out of battery holder.
- ☑ When putting the battery back in, make sure it the battery is oriented so the terminals connect.

Step 3 — Case



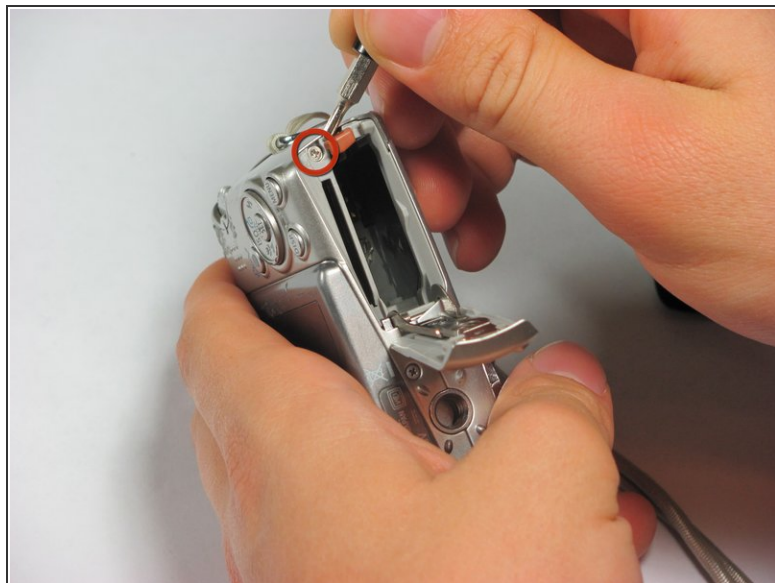
- Remove the following 4 screws:
 - Two 2.8 mm Phillips #00 at the bottom of the camera.
 - Two 2.75 mm Phillips #00 on the opposite side of the wrist strap.

Step 4



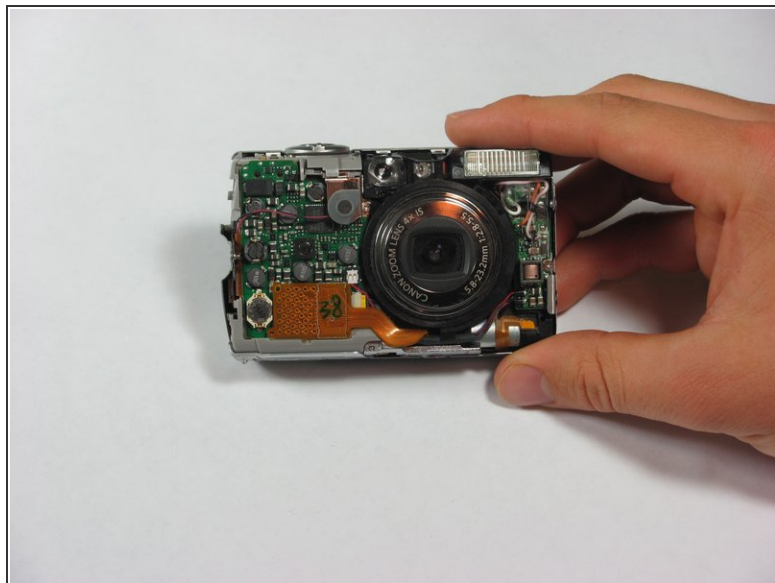
- Open the A/V OUT DIGITAL flap on the side of the wrist strap.
- Remove the 2.75 mm Phillips #00 under the A/V OUT DIGITAL flap on the side of the wrist strap.

Step 5



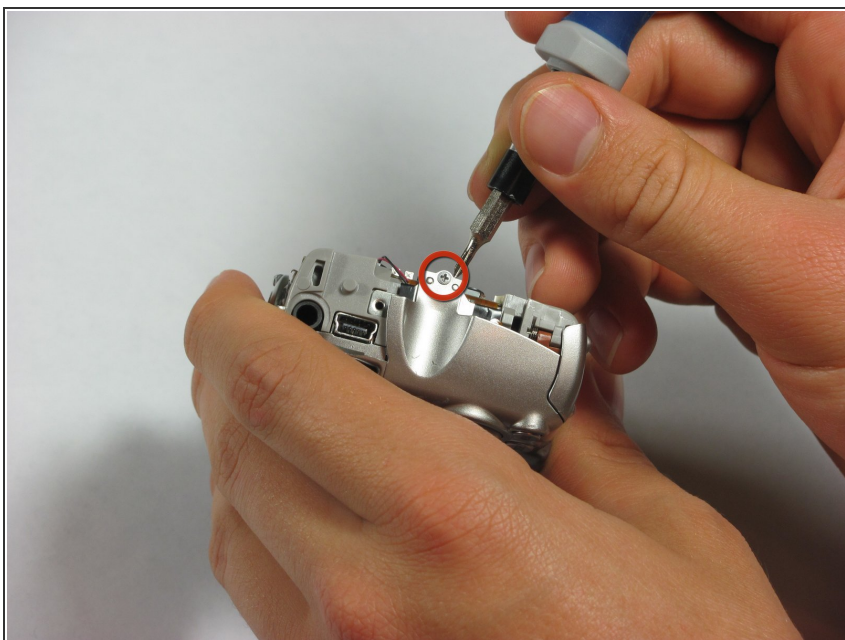
- On the bottom of the camera, use your fingernail to slide the light gray tab towards the edge of the camera.
- Slide light gray door and pull up to open the door.
- Remove the 8.35 mm Phillips #00 next to the brown tab that holds the battery.

Step 6



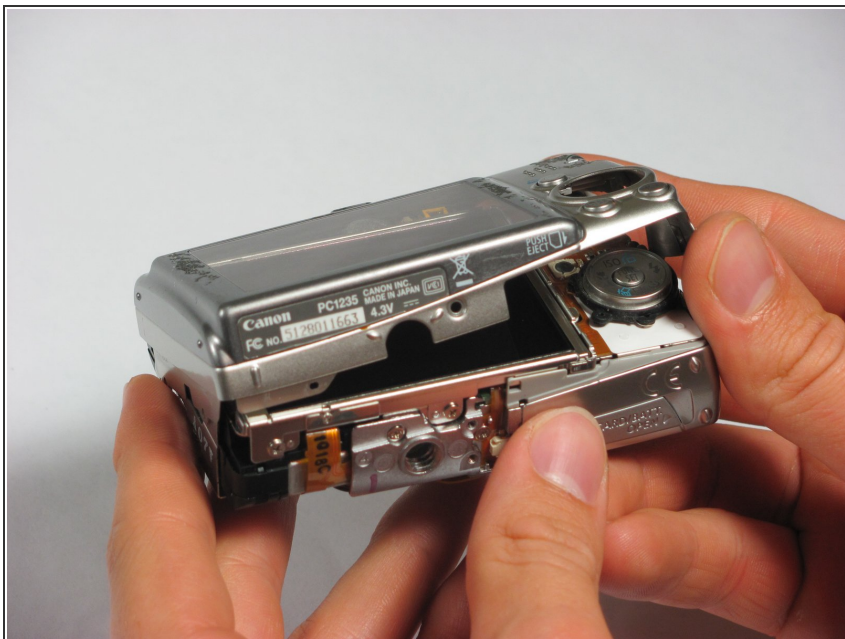
- Gently pull the front cover straight out from the camera. This will expose the wiring on the front of the camera.

Step 7



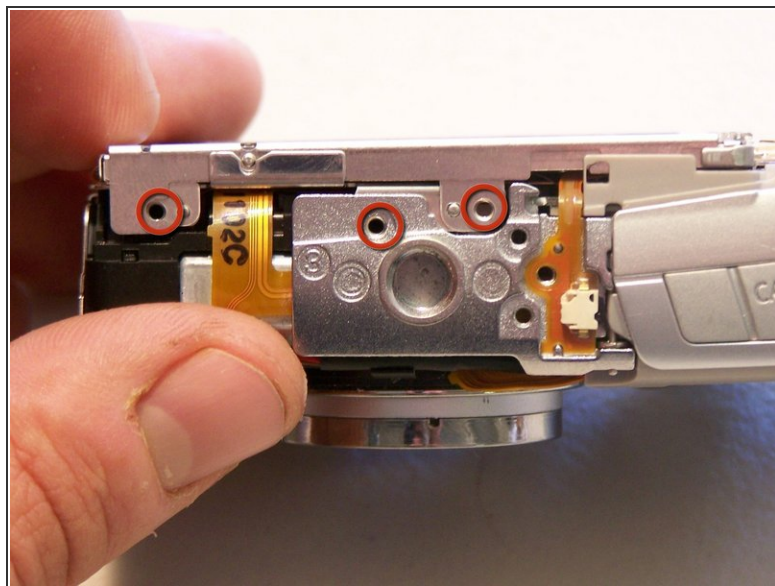
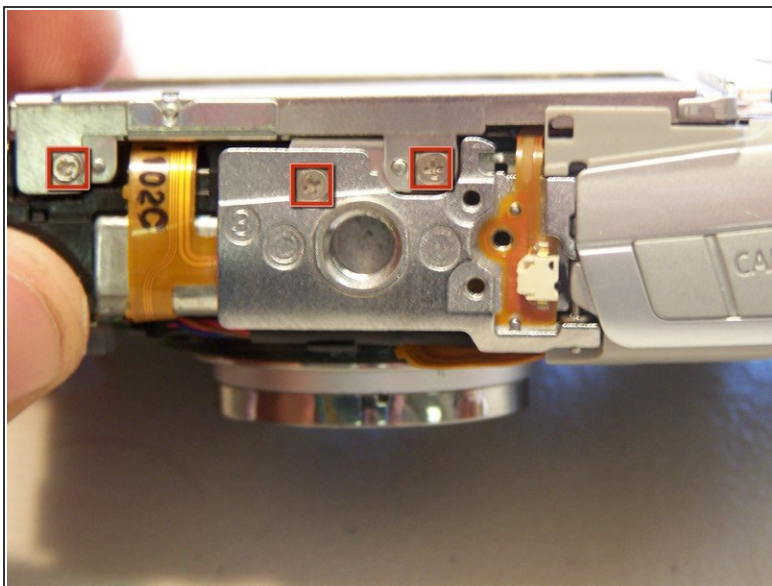
- Remove the 2.75 mm Phillips #00 next to A/V OUT DIGITAL.

Step 8



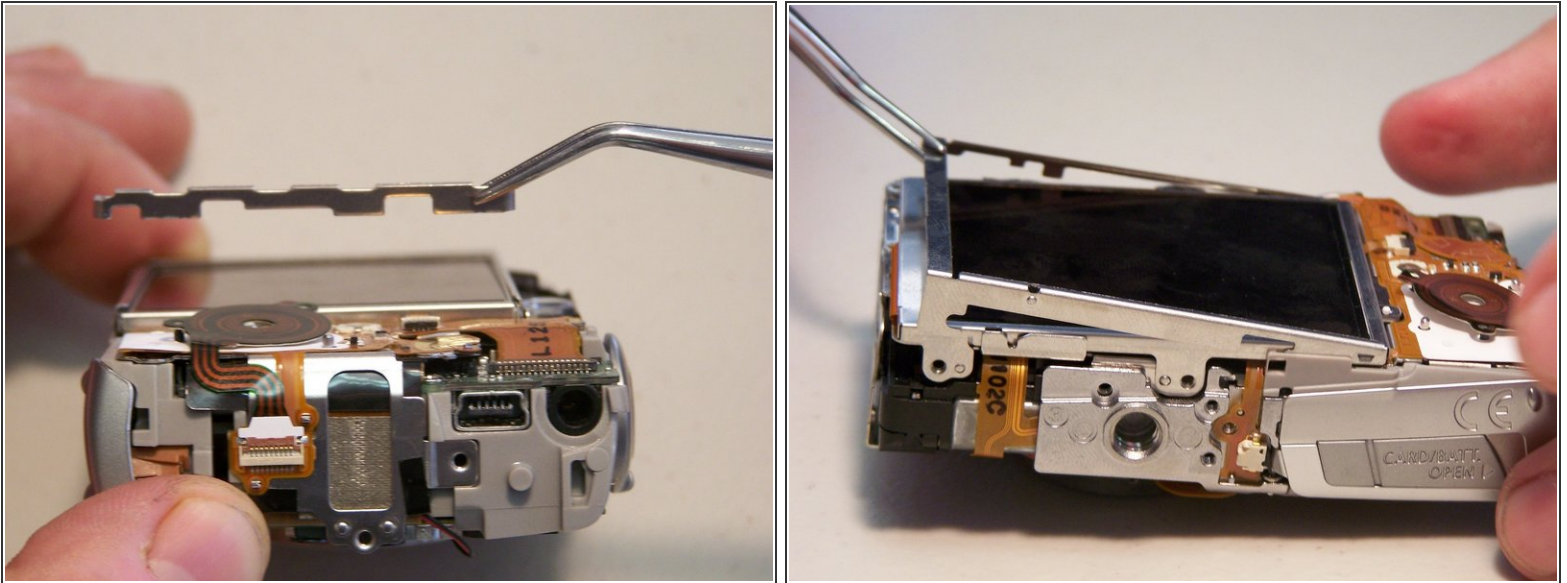
- Slide the back casing (with the screen protector) off to reveal the LCD and back wiring.

Step 9 — LCD Screen



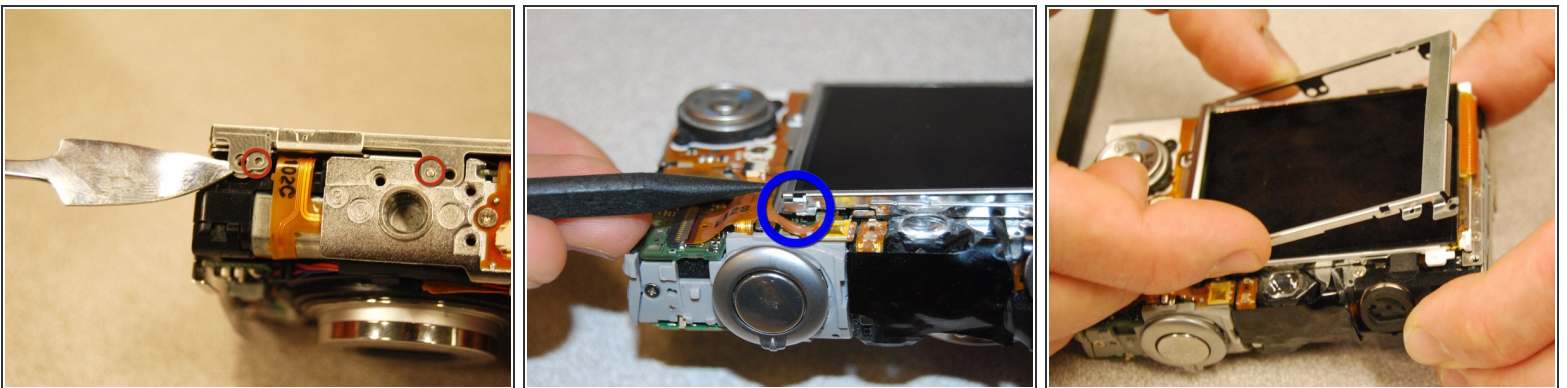
- Remove the three screws attached to the bottom of the LCD brackets

Step 10



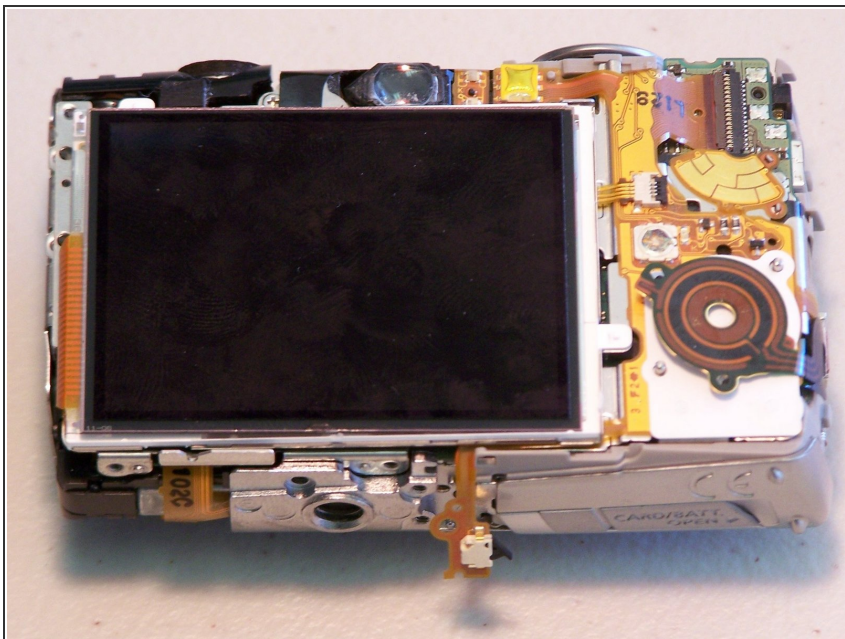
- Remove the one quarter bracket around the LCD screen
- Remove the three quarter bracket around the LCD screen.

Step 11



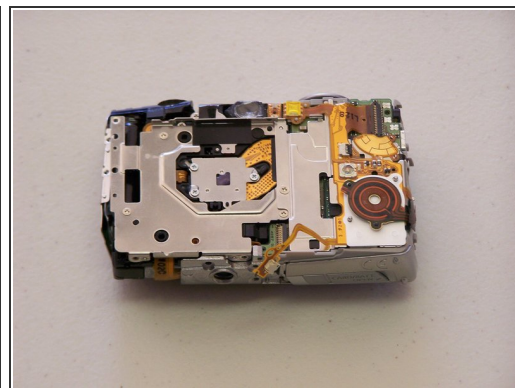
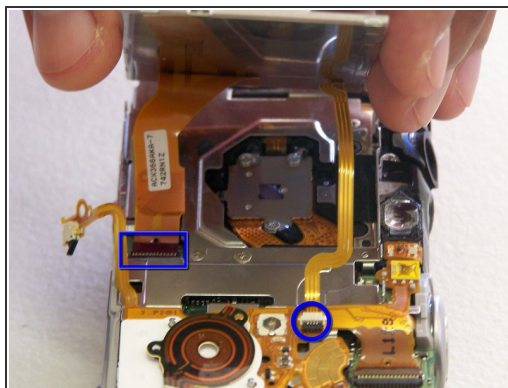
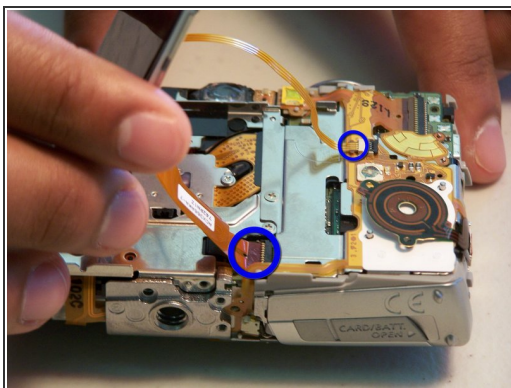
- i** Please Note: There are two areas of interest before removing the final bracket.
- First, use a spudger to pry the the two tabs from the small guide pins.
 - Second, slide the bracket to the right as indicated in the second picture while lifting up. A small tab is holding the final bracket in place.
 - Remove the square metal bracket.

Step 12



- At this point the screen should be easy to lift from the camera body.

Step 13



- Lift the LCD screen and remove the two ribbon cables.

To reassemble your device, follow these instructions in reverse order.